

REHP Leak Kit

INSTALLATION INSTRUCTIONS

Kit Name	EHPWH Leak Kit
Kit Part Number	103000119
Compatible Rinnai Products	Rinnai Heat Pump Water Heater: All REHP Models

WARNING

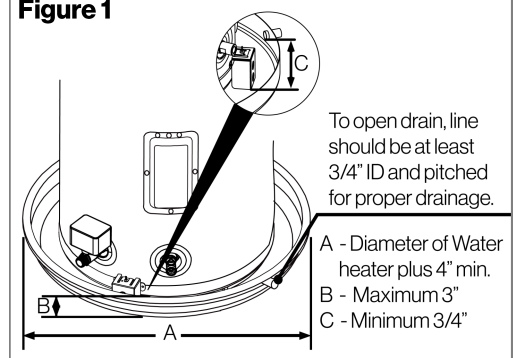
Failure to correctly assemble the components according to these instructions may result in electric shock, injury, or death.

CAUTION

To protect yourself from harm, follow the steps below before proceeding.

- Antistatic gloves must be worn.
- Disconnect the electrical power supply by turning off the electricity at the circuit breaker.
- A suitable drain pan (refer Figure 1) **MUST** be used with leak kit where property damage could occur from water spillage.
- The auxiliary drain pan installation **MUST** conform to local codes. Drain pans are available from the store where the water heater was purchased, or any water heater distribution. The drain pan should not block the cold inlet or the drain valve. Ensure the floor beneath the water heater can support its filled weight adequately. As shown in figure 1, the height of open drain line from the bottom of the leak kit sensor bracket should be at least 3/4 inch (shown as dimension "C").

Figure 1

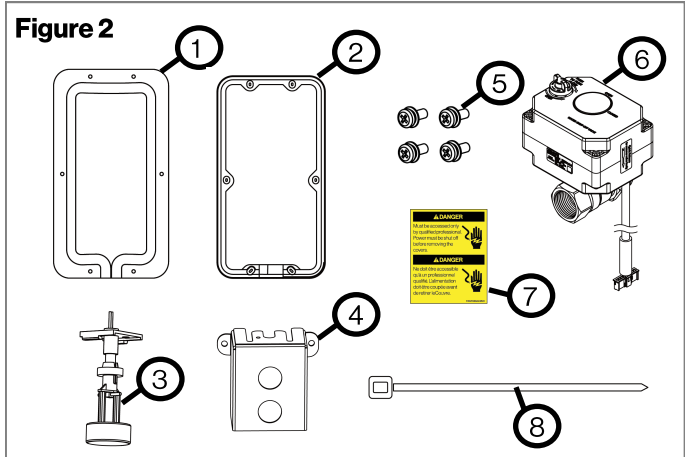


Items Inside Product Box

Before installation, please make sure all parts are located inside the product box.

Table 1

Item #	Item	Qty
1	Electric Heater Cover	1
2	Cover Gasket	1
3	Water Level Switch	1
4	Switch Bracket	1
5	Screws	4
6	Automatic Shut-off Valve	1
7	Warning Label	1
8	Zip Ties	2

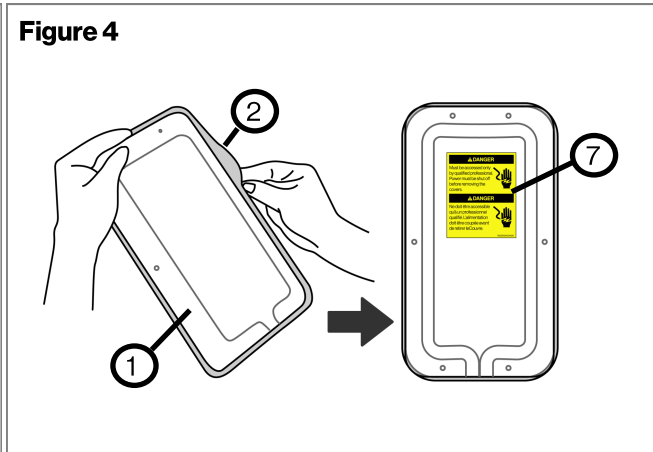
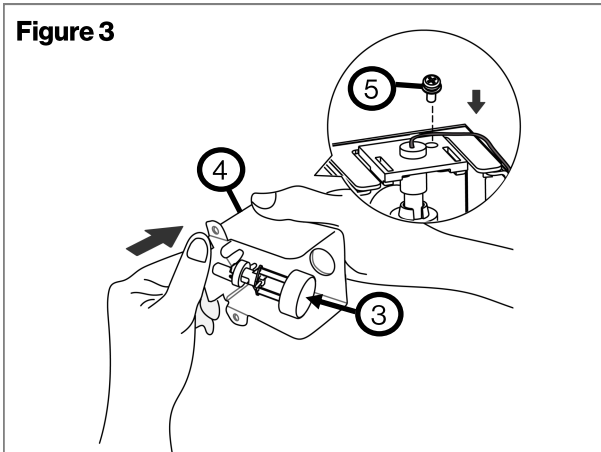


TOOLS/MATERIALS REQUIRED

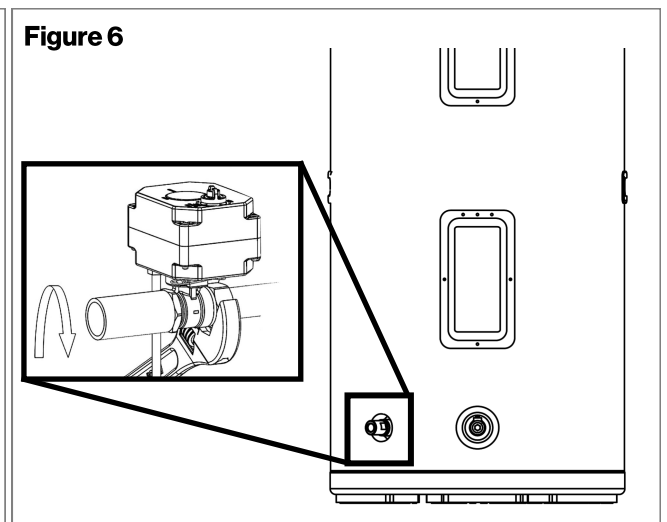
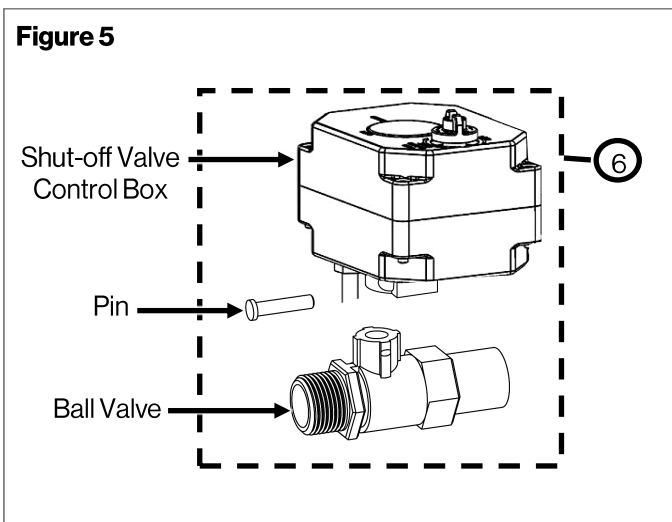
- Phillips Head Screw Driver
- Thread Sealant Tape OR Pipe Joint Compound
- Flush Cutter
- Adjustable Wrench OR Pipe Wrench

Rinnai

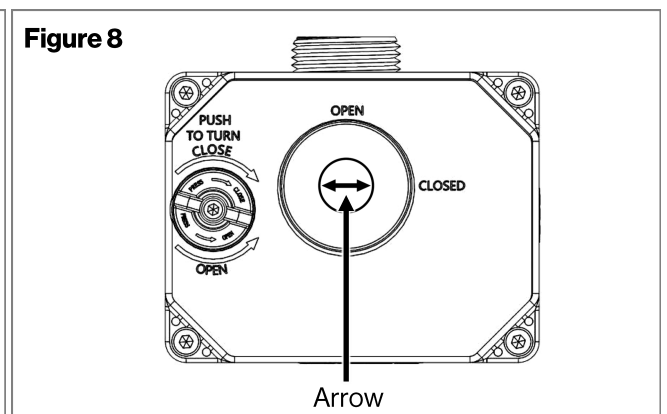
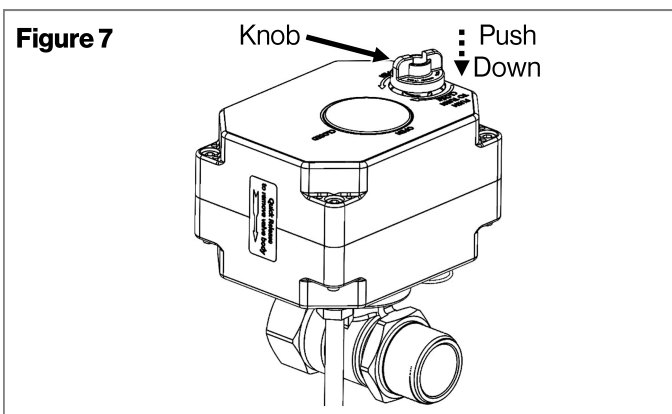
1. Antistatic gloves must be worn to protect yourself from harm.
2. Disconnect the electrical power supply by turning off the electricity at the circuit breaker.
3. If tank filled with water, empty the tank by connecting a drain hose to drain valve and opening the drain valve.
4. Prepare the water level switch by inserting the water level switch horizontally into the upper part of the switch bracket. Secure the water level switch by installing one screw using Phillips head screwdriver (Figure 3).
5. Prepare the electric heater cover by installing the cover gasket around the heater cover and mounting the warning label to the front side of the cover (Figure 4).



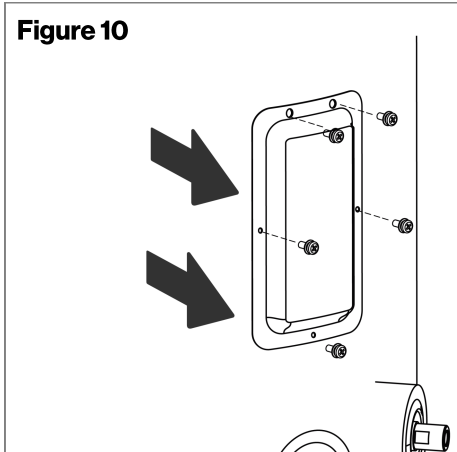
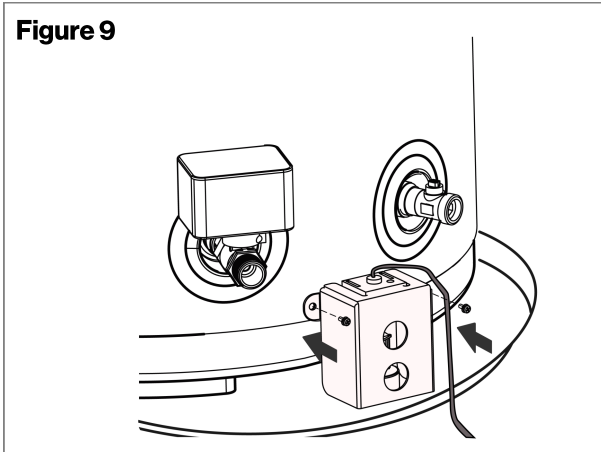
6. To install the automatic shut-off valve, remove the ball valve by pulling out the pin and sliding off the shut off valve control box (Figure 5).
7. Use an adjustable wrench to install ball valve to the water inlet connection on the tank. Ensure to use thread sealant tape or pipe joint compound to prevent any water leakage. Once ball valve is installed, remount the shut-off valve control box and secure it using a pin (Figure 6).



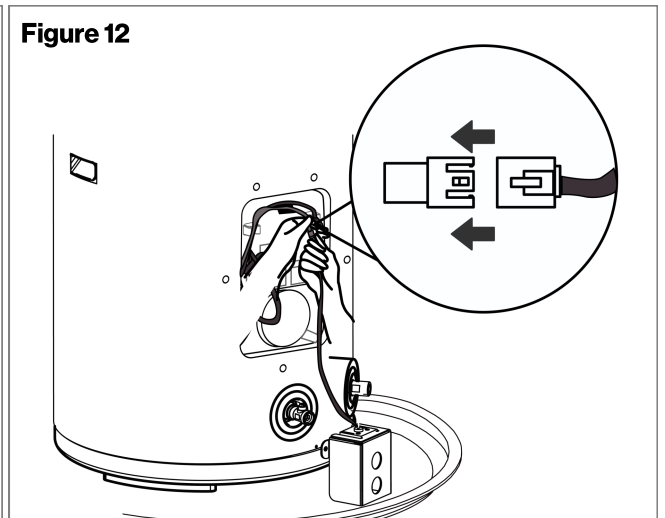
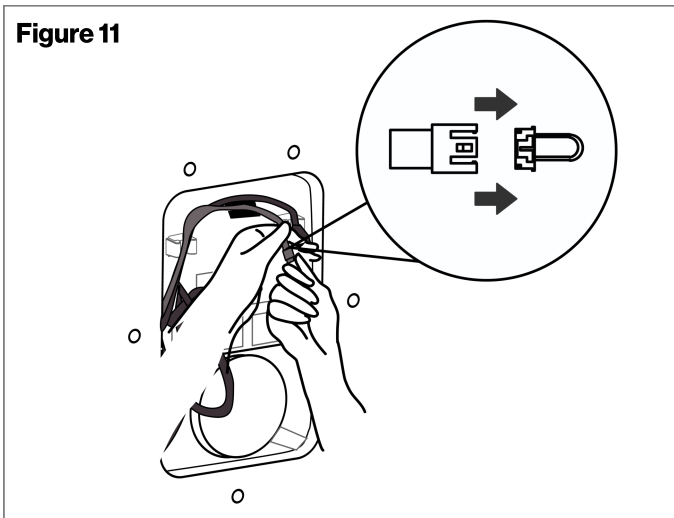
NOTE: To close the automatic shut-off valve manually, press down the knob and rotate it clockwise until the arrow faces "CLOSED" on the window (Figure 7 & 8). Ensure not to apply additional force on the knob to prevent any damage.



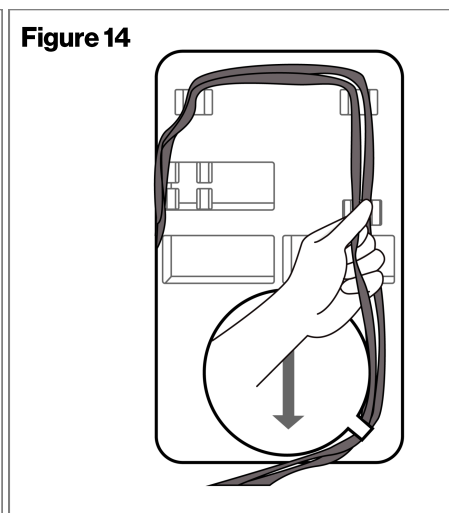
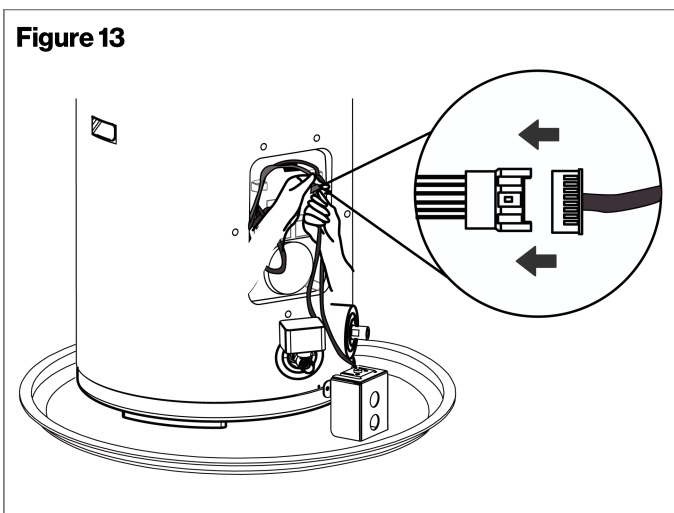
8. The appliance has a predrilled mounting holes to install water level switch bracket. Install the water level switch bracket to the appliance using two screws (Figure 9).
9. Remove the screws securing lower electric heater cover from the appliance and discard the electric heater cover (Figure 10).



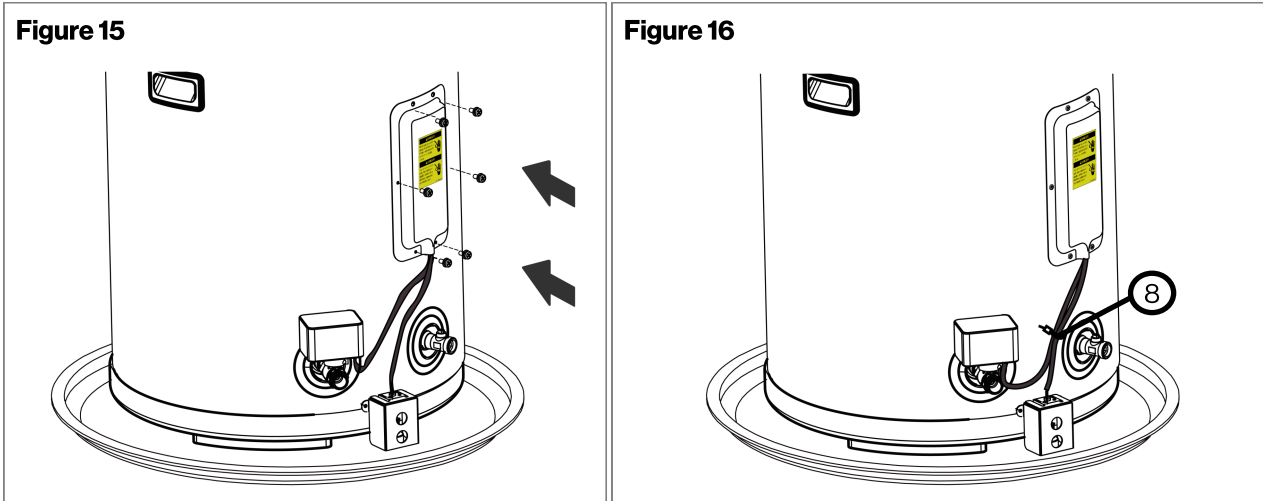
10. Locate the two connectors inside the lower electric heater cavity. Remove the male connector pins from the female connectors on the appliance side (Figure 11).
11. Connect the water level switch connector to the appliance (Figure 12).



12. Connect the automatic shut-off valve connector to the appliance female connector (Figure 13).
13. Organize the wires into the slot as shown in Figure 14.



14. Secure the provided electric heater cover to the tank. Ensure that the wires are guided through the slot on the cover (Figure 15).
15. Use zip ties to secure the wires together. Ensure that the wires do not come in contact with the drain pan once secured using zip ties (Figure 16). Use flush cutter to cut off extra piece of zip ties.



16. Turn on the water by manually opening all valves for the hot and cold water connections at the appliance. Check for any leak around the automatic shut-off valve. Allow the tank to refill before connecting power supply. Open faucet in the house to bleed out excessive air while filling up the tank.
17. Reconnect the electrical power supply by turning on the electricity at the circuit breaker.
18. Press and hold the “🔧” button for 3 seconds on the main interface. Select engineering channel 38 by pressing “^” or “v” buttons. Once reached to engineering channel 38, press “✔” to enter. Change the parameter to “1” using “^” and “v” buttons (Figure 17).

Figure 17

Engineering Channel 38	Shut-Off Valve Setting	0: off (Default) 1: on
-------------------------------	------------------------	---------------------------

3 seconds

19. Ensure that the appliance runs fine. A faucet may need to be opened to fire the appliance.